

**APRIL 2024 • ISSUE 370**

## **BUDGET INCREASE ESTIMATED AT ONLY \$2.67 PER MONTH FOR AVERAGE HOME**

<b>Proposed Operating Budget Tax Levy 2024-2025</b>	<b>Annual Library Tax for Average Home (estimated)</b>	<b>Increase from 2023-24 for Average Home (estimated)</b>
<b>\$11,806,500</b>	<b>\$710</b>	<b>\$32 annually</b>

Dear Library Patrons:

In a world that feels ever-changing, one constant remains: our dedication to serving you, the heart of our community. We've navigated the challenges of our times, including persistent inflationary increases over the past three years and other economic pressures which have had a significant effect on the library. Despite it all, our commitment to providing top-quality library services is unwavering.

This year, we face the necessary step of proposing a 4.76 percent estimated tax increase, a decision not made lightly but with careful consideration for the future of our library and its patrons.

This increase, though above the state tax cap of 2 percent, translates to just \$32 estimated annually or a modest \$2.67 per month for the average household assessed at \$1,995. To put this in perspective, the increase is less than last year's inflationary food cost increase of 5.8 percent.\*

Central to our budget this year is the need to fairly compensate our staff, especially part-time custodians and part-time library clerks, roles crucial to our operation yet challenging to fill and retain. By adjusting these salaries, we aim not only to attract and retain dedicated employees but also to adapt to the state's minimum wage increase, ensuring our library remains a place of opportunity and growth.

Importantly, this proposed budget is totally separate from our capital building project, which continues to progress with the opening of our main library in Shirley anticipated this fall. Funded primarily by a previously approved bond, this project reflects our commitment to enhancing our facilities and making our community stronger, more resilient, and more connected than ever.

This year's proposed operating budget includes the costs associated with running three state-of-the-art facilities: the Main Library, set to open its doors in the third quarter of 2024, and our fully operational satellite branches in Moriches and Mastic Beach. This investment is vital not only for the maintenance and enhancement of our current services but also for ensuring that our newest addition — the Main Library — will meet the high standards of excellent service and accessibility you've come to expect from us.

We understand that any increase in taxes is significant and want to assure you that this decision was reached with the utmost care and consideration for the impact on our community. We are here to answer your questions, provide clarity, and discuss any concerns you may have.

Sincerely,

THE BOARD OF TRUSTEES

\*Source: U.S. Department of Agriculture



**TUESDAY, APRIL 2**  
**9:00 a.m. – 9:00 p.m.**  
at the  
**Mastic Beach Satellite Branch,**  
**369 Neighborhood Road**

**DID YOU KNOW?** Out of the last EIGHT years, the Community Library has only increased its operating budget twice.

### **Annual Trustee Election**

A five member board of trustees elected by the public governs the library. There are two terms up for election: April 2, 2024-June 30, 2025 and July 1, 2024-June 30, 2029. The candidate receiving the most votes will assume the seat with the term of July 1, 2024-June 30, 2029.

Trustee incumbents Joseph Maiorana and Chris Ricciardi are running unopposed.

# IMPROVING LOCAL NEIGHBORHOODS!

**FOR COMPLETE BUDGET INFORMATION VISIT  
WWW.COMMUNITYLIBRARY.ORG**

Use your mobile phone or tablet's camera  
to scan the QR Code to use this

## ONLINE TAX CALCULATOR

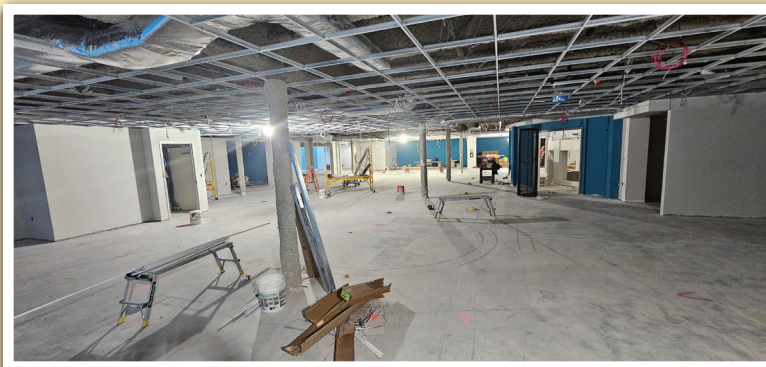


**ENTER YOUR HOME'S ASSESSED  
VALUATION, FOUND ON YOUR MOST  
RECENT PROPERTY TAX STATEMENT,  
TO SEE A PERSONALIZED ESTIMATE  
OF WHAT YOUR LIBRARY TAX  
WOULD BE.**

You can also visit the Town of Brookhaven  
Assessor's Office sample tax bill for help  
understanding your statement:  
<https://tinyurl.com/mpswxmh>



*Construction at the Main Library at 407 William Floyd Parkway  
continues to progress month by month, with much of the  
exterior work finished including siding and windows.*



*Work on the interior finishes of the Main Library will continue  
through the spring and summer, with an anticipated  
opening day in the fall of 2024!*

## OUR NEW BRANCHES ARE THRIVING

### BRANCH STATISTICS FOR JULY 2023 - JANUARY 2024

**MASTIC BEACH BRANCH  
46,999 visits**

**MORICHES BRANCH  
37,661 visits**

- 84,660 patron visits to our branches.
- Patrons borrowed 134,497 items.
- We offered 1,322 programs that generated attendance of 16,481.
- We offered 33 online programs that generated attendance of 128.
- We offered 719 literacy classes that generated attendance of 7,237.
- Another 687 attended online literacy classes.
- We saw 63,450 visits to our website.

Mastics-Moriches-Shirley Community Library  
 FY 2024-2025  
 Operating Budget (PROPOSED)

	<u>2023-2024</u>	<u>2024-2025</u>
<b>Employee Salaries</b>		
Professional	\$ 2,213,481	\$ 2,713,871
Clerical	\$ 1,154,198	\$ 1,808,451
Page	\$ 243,643	\$ 471,012
Custodial	\$ 255,731	\$ 595,190
Security	\$ 334,241	\$ 470,232
Employee Insurances & Benefits	\$ 1,139,015	\$ 1,310,488
NYS Retirement - Mandatory Contribution	\$ 389,332	\$ 498,198
Payroll Taxes	\$ 310,000	\$ 403,325
<b>Materials and Programs</b>		
Books & Periodicals	\$ 283,150	\$ 283,150
Recordings & Videos	\$ 171,150	\$ 171,150
Electronic Resources	\$ 75,000	\$ 75,000
Programs (Adult, Teen, Childrens & Literacy)	\$ 237,650	\$ 272,650
<b>Library Operations</b>		
Equipment & Equipment Maintenance	\$ 1,108,760	\$ 544,290
Telecommunications	\$ 65,000	\$ 78,830
Printing & Postage	\$ 143,090	\$ 200,500
Supplies	\$ 61,362	\$ 85,000
Contracts - SCLS	\$ 85,263	\$ 78,750
Insurance	\$ 90,000	\$ 90,000
Professional Fees	\$ 289,195	\$ 289,195
Administrative	\$ 107,000	\$ 96,000
Facilities	\$ 1,300,920	\$ 209,050
<b>Debt Service</b>		
Bond Referendum	\$ 1,483,194	\$ 1,482,168
<b>TOTAL OPERATING BUDGET</b>	<b><u>\$ 11,540,375</u></b>	<b><u>\$ 12,226,500</u></b>
Less: Anticipated Income (Contract Revenue, Fines, State Aid, etc.)	\$ 270,000	\$ 420,000
<b>TOTAL TAX LEVY</b>	<b><u>\$ 11,270,375</u></b>	<b><u>\$ 11,806,500</u></b>

Voting will take place on Tuesday, April 2, 2024, from 9:00 a.m. to 9:00 p.m. at the Mastic Beach Branch of the Community Library. In order to vote, you must be: (1) 18 years of age or older, (2) a citizen of the U.S., (3) a resident of the district for at least 30 days, and (4) registered to vote.

**The estimated tax rate associated with the proposed operating budget is \$35.61 per \$100 of assessed valuation, which equates to an estimated annual levy of \$710 for an average household (based on an assessed valuation of 1,995).**

A five member Board of Trustees elected by the voters of the district governs the Library. If you have any questions about this proposed budget, please contact Kerri Rosalia, Library Director at (631) 399-1511 ext. 1001.