

STATE OF NEW YORK  
PUBLIC SERVICE COMMISSION

---

Application of Sunrise Wind LLC for a Certificate of Environmental Compatibility and Public Need for the Construction of Up to 6.2 Miles (320 kilovolt [kV]) of Direct Current (DC) Submarine Export Cable from the New York State Territorial Waters Boundary to the Smith Point County Park on Fire Island in the Town of Brookhaven in Suffolk County and Up to 17.5 Miles (320 kV) of Onshore Transmission Cable from the Landfall at Fire Island to a New Onshore Converter Station in the Town of Brookhaven and Up to 1 Mile (138 kV) of Alternating Current (AC) Onshore Interconnection Cable Connecting to the Existing Holbrook Substation in the Town of Brookhaven in Suffolk County

---

Case 20-T-0617  
Deficiency No. 1

**SUNRISE WIND LLC's RESPONSE  
TO THE MAY 20, 2021 DEFICIENCY NOTICE**

**Deficiency No. 1**

*16 NYCRR §86.3(a)(1) requires an applicant to submit detailed maps, drawings and explanations showing the right-of-way for each proposed facility. Such maps, drawings and explanations shall include:*

*(1) New York State Department of Transportation (NYSDOT) maps (1:24,000 topographic edition), showing:*

*(i) the proposed right-of-way (with control points indicated), covering an area of at least five miles on either side of the proposed facility location;*

*(ii) where the construction or reconstruction of the proposed facility would necessitate permanent clearing or other changes to the topography, vegetation or man-made structures; and*

*(iii) any known archaeologic, geologic, historical or scenic area, park or untouched wilderness on or within three miles of the right-of-way.*

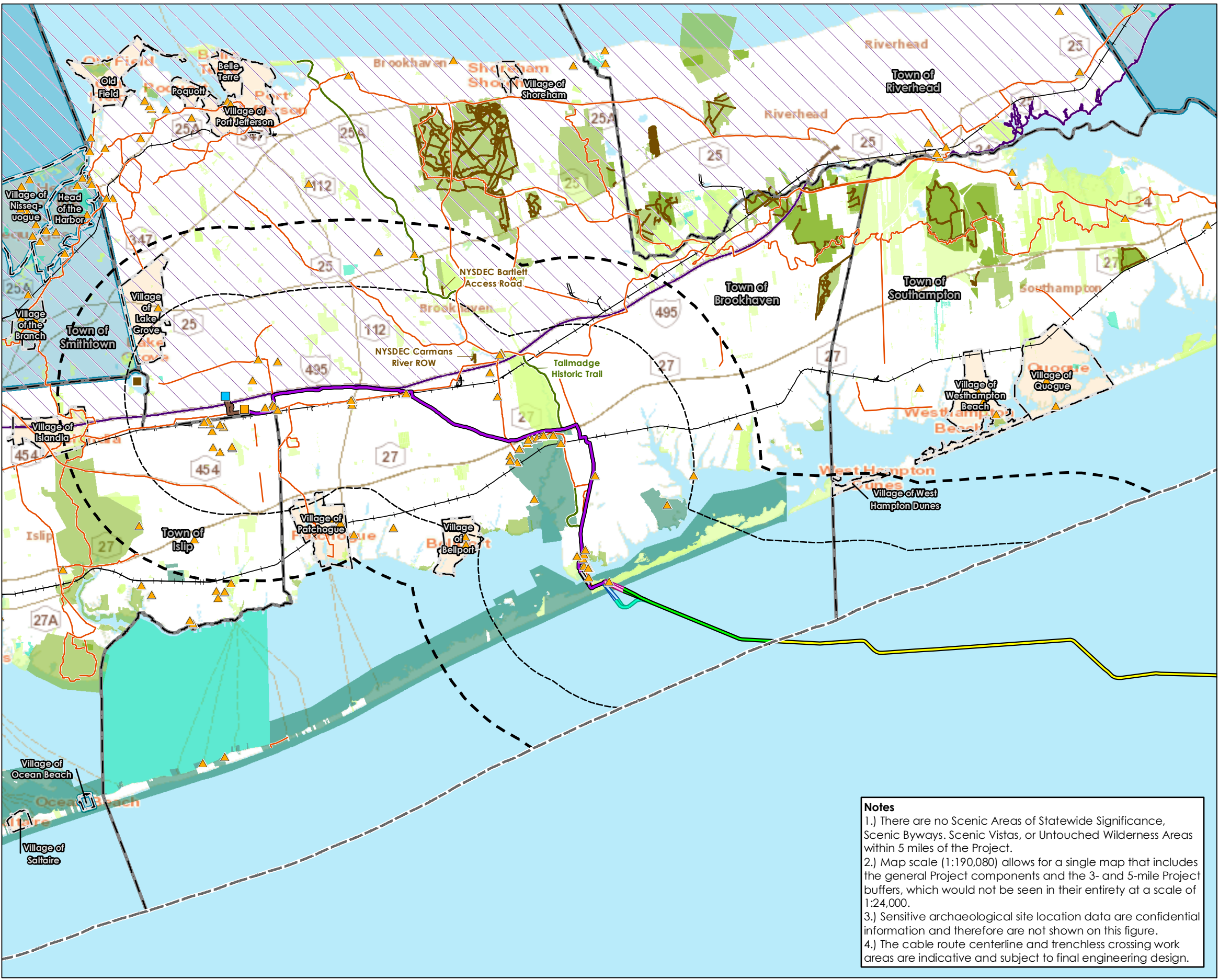
*The Deficiency Letter stated that although the Applicant has included a waiver request for the NYSDOT map (1:24,000 topographic edition), the waiver request only addresses the scale requirements and does not provide justification for any waiver of the requirement that the required information be presented on topographic edition maps. Revised Figure 2.3-2 included in the Application Supplement and Amendment appears to include planimetric maps that do not show topographic features. Please provide a further revised*

*Figure 2.3-2 that includes the required information of 16 NYCRR §86.3(a)(1)(i)-(iii) on maps at a 1:24,000 scale showing topographic features.*

**Sunrise Wind's Response:**

See the enclosed public version of Revised Figure 2.3-2, which has been further updated to include topographic features in full satisfaction of 16 NYCRR § 86.3 (a) (1) (i)-(iii). The confidential version of Revised Figure 2.3-2 will be provided to the presiding Administrative Law Judges with a request for exemption from disclosure.

V:\1956\active\Task Owner and other Non-BC1956 Jobs\2028113199\03\_data\gis\_cad\gisMXDs\Article VII\2028113199\_2.3-2\_Location.mxd Revised: 2021-05-26 By: gaupentier



#### Notes

- 1.) There are no Scenic Areas of Statewide Significance, Scenic Byways, Scenic Vistas, or Untouched Wilderness Areas within 5 miles of the Project.
- 2.) Map scale (1:190,080) allows for a single map that includes the general Project components and the 3- and 5-mile Project buffers, which would not be seen in their entirety at a scale of 1:24,000.
- 3.) Sensitive archaeological site location data are confidential information and therefore are not shown on this figure.
- 4.) The cable route centerline and trenchless crossing work areas are indicative and subject to final engineering design.

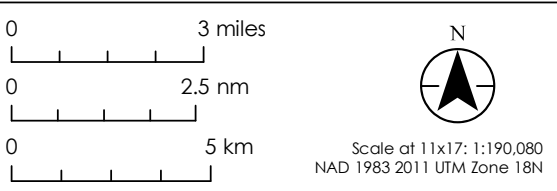
### Revised Figure 2.3-2 Location of Facilities on NYSDOT Mapping

**Sunrise  
Wind**

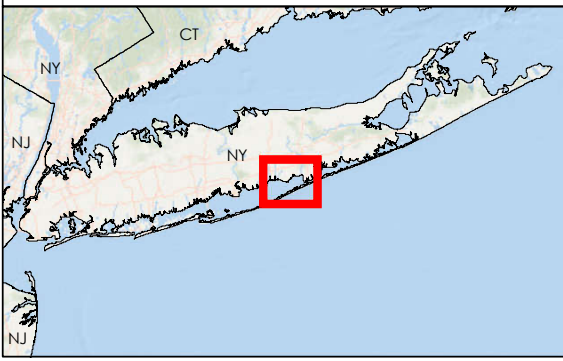
Powered by  
**Ørsted &  
Eversource**

Legend	
	Sunrise Wind Export Cable (SRWEC-OCS)
	Sunrise Wind Export Cable (SRWEC-NYS)
	SRWEC-NYS (Western Landfall Option)
	Landfall HDD A
	Landfall HDD B
	Landfall HDD C
	Intracoastal Waterway HDD (ICW HDD)
	Onshore Transmission Cable-LIE Service Road Route
	Union Avenue Site
	Onshore Interconnection Cable Route
	Holbrook Substation
	3 Miles from Project
	5 Miles from Project
	3-Nautical Mile State Water Boundary
	Railroad
	New York State Department of Transportation (NYSDOT)-Bicycle Route
	Tallmadge Historic Trail
	New York State Department of Environmental Conservation (NYSDEC)-Trails
	State/National Register of Historic Places
	Local Park/ Recreation/ Conservation Land
	State Park/ Recreation/ Conservation Land
	National Park/ Recreation/ Conservation Land
	NGO Nature Reserve or Preserve
	Local Waterfront Revitalization Program (LWRP)-Identified Scenic Resource
	State Heritage Area
	Unique Geological Feature
	Village Boundary
	Town Boundary

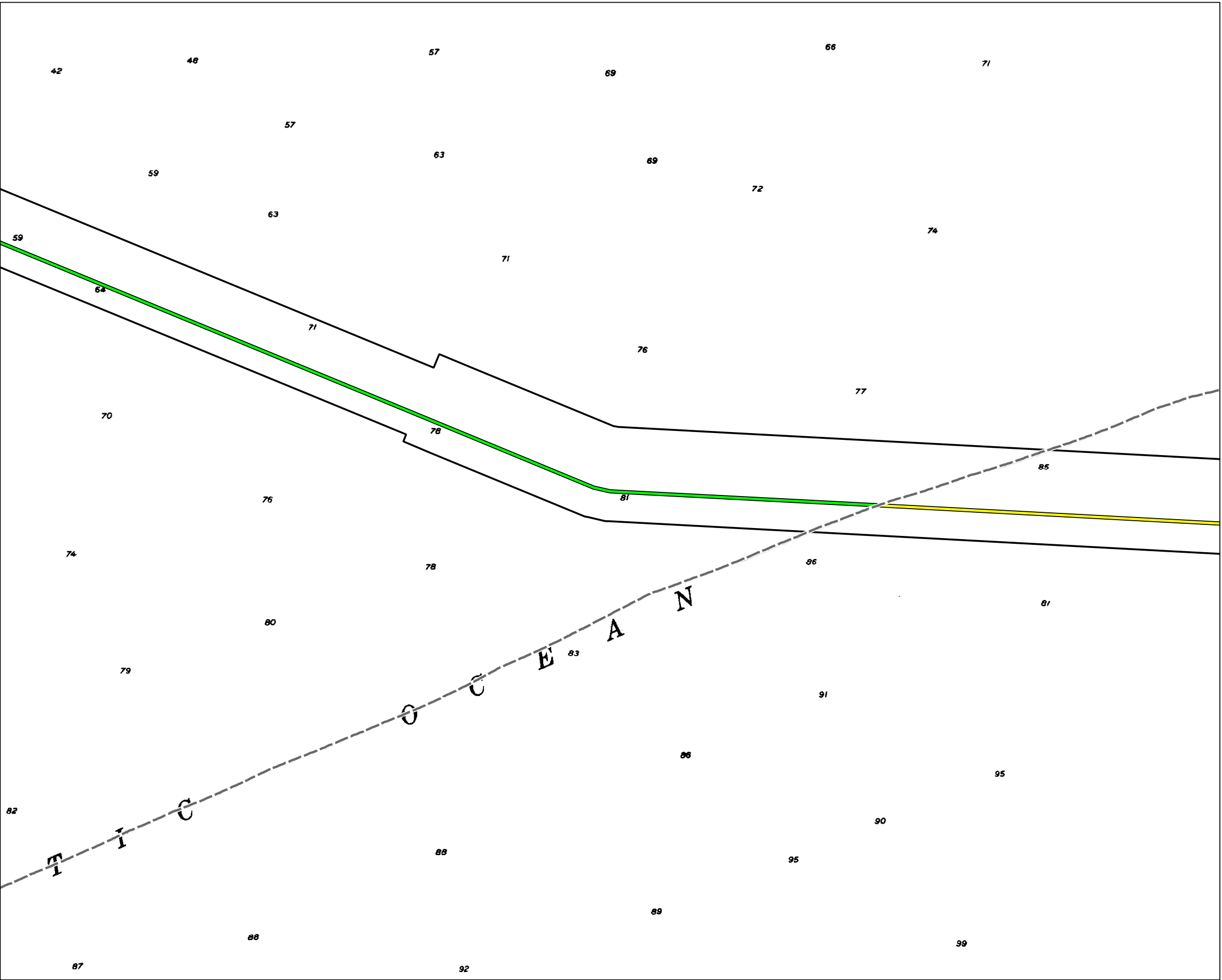
Date	5/26/2021
Project Number	2028113199
Prepared By	PB
Reviewed By	SBG



#### REFERENCE MAP



V:\1956\active\Task Owner and other Non-BC\1956\_Jobs\2028113199\03\_data\gis\_cad\gisMXDs\Article VII\2028113199\_2.3-2\_Location\NYSDOT.mxd      Revised: 2021-05-26 By: gcarpentier



Revised Figure 2.3-2  
Location of Facilities  
on NYSDOT Mapping

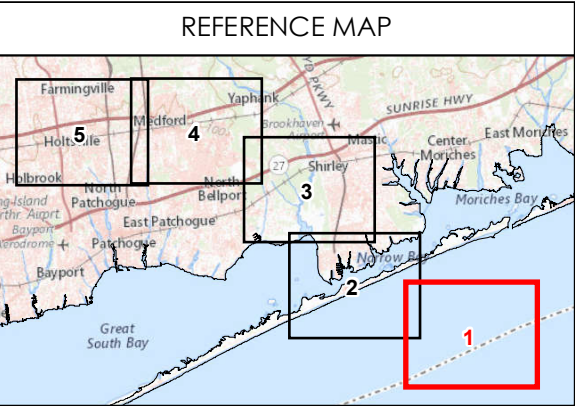
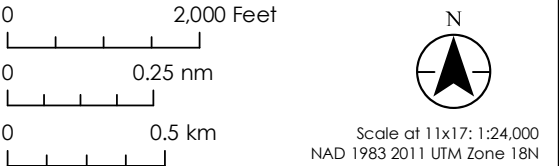
Sunrise  
Wind

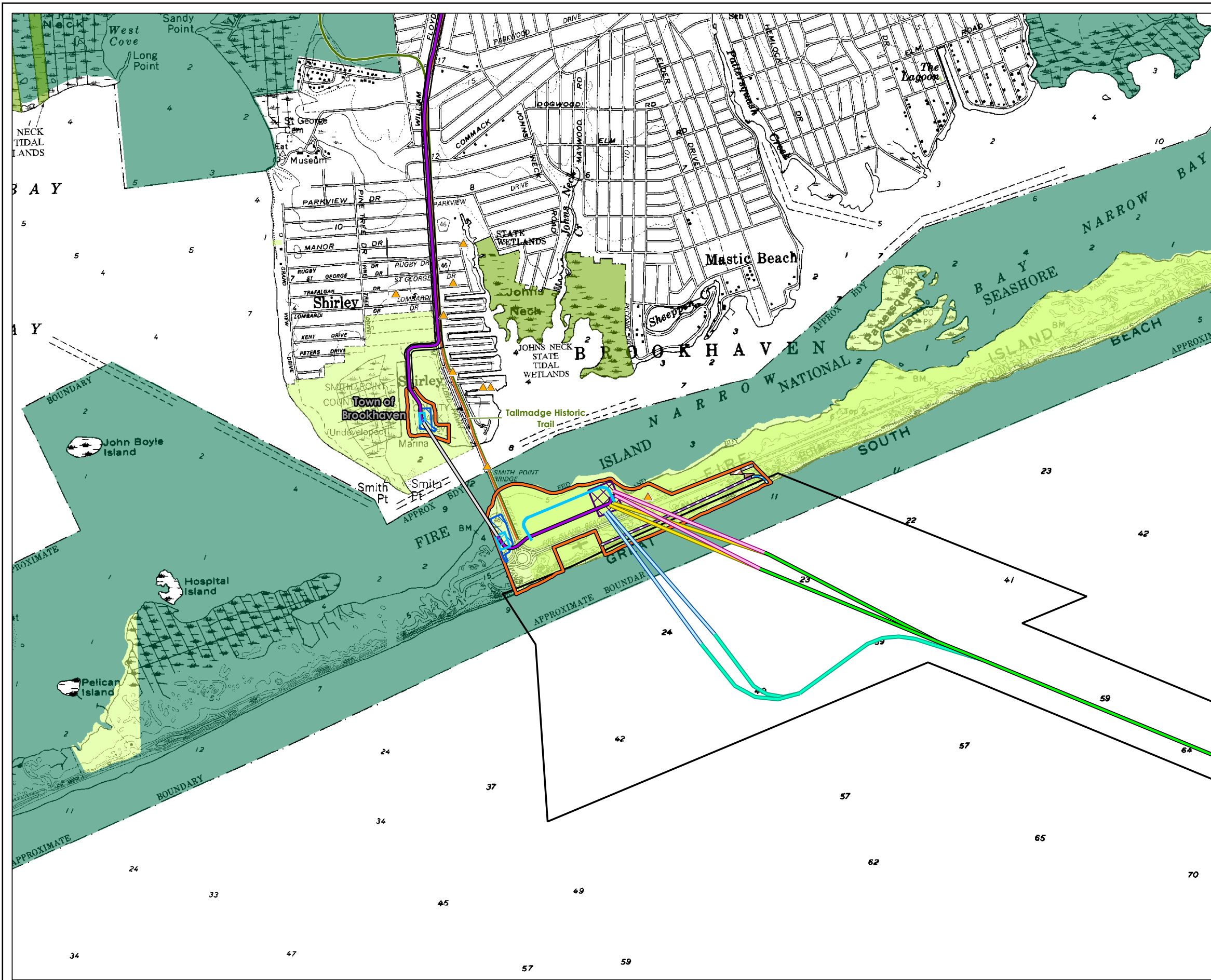
Powered by  
Ørsted &  
Eversource

- Legend
- Sunrise Wind Export Cable (SRWEC-OCS)
  - Sunrise Wind Export Cable (SRWEC-NYS)
  - SRWEC Corridor
  - Trenchless Crossing Work Area
  - 3-Nautical Mile State Water Boundary
  - Town Boundary

- Notes
1. The cable route centerline and trenchless crossing work areas are indicative and subject to final engineering design.
  2. Sensitive archaeological site location data are confidential information and therefore are not shown on this figure.

Date	5/26/2021
Project Number	2028113199
Prepared By	PB
Reviewed By	SBG





Revised Figure 2.3-2  
Location of Facilities  
on NYSDOT Mapping

Sunrise  
Wind

Powered by  
Ørsted &  
Eversource

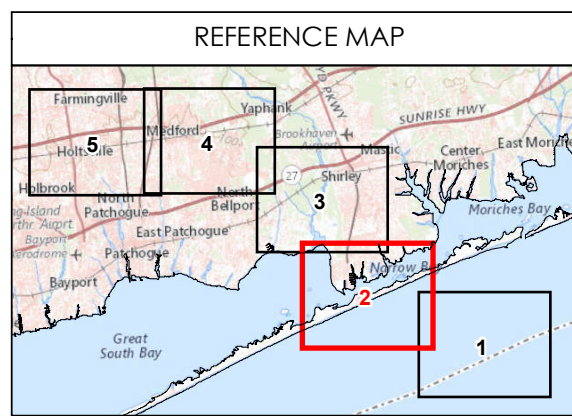
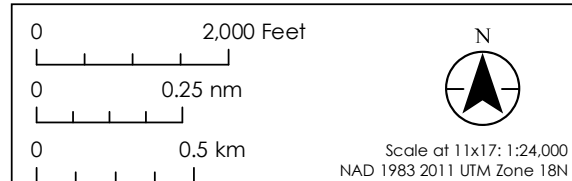
- Legend
- Sunrise Wind Export Cable (SRWEC-NYS)
  - SRWEC (Western Landfall Option)
  - Landfall HDD A
  - Landfall HDD B
  - Landfall HDD C
  - Intracoastal Waterway HDD (ICW HDD)
  - Onshore Transmission Cable-LIE Service Road Route
  - Onshore Transmission Cable Corridor
  - SRWEC Corridor
  - Trenchless Crossing Work Area
  - Landfall/ICW Study Area
  - Landfall Work Area
  - ICW Work Area
  - Pipe Sea Access
  - Pipe Storage
  - Pipe Stringing Area
  - Indicative Access to Pipe Areas
  - New York State Department of Transportation (NYSDOT)-Bicycle Route
  - State/National Register of Historic Places
  - Local Park/ Recreation/ Conservation Land
  - State Park/ Recreation/ Conservation Land
  - National Park/ Recreation/ Conservation Land
  - Town Boundary

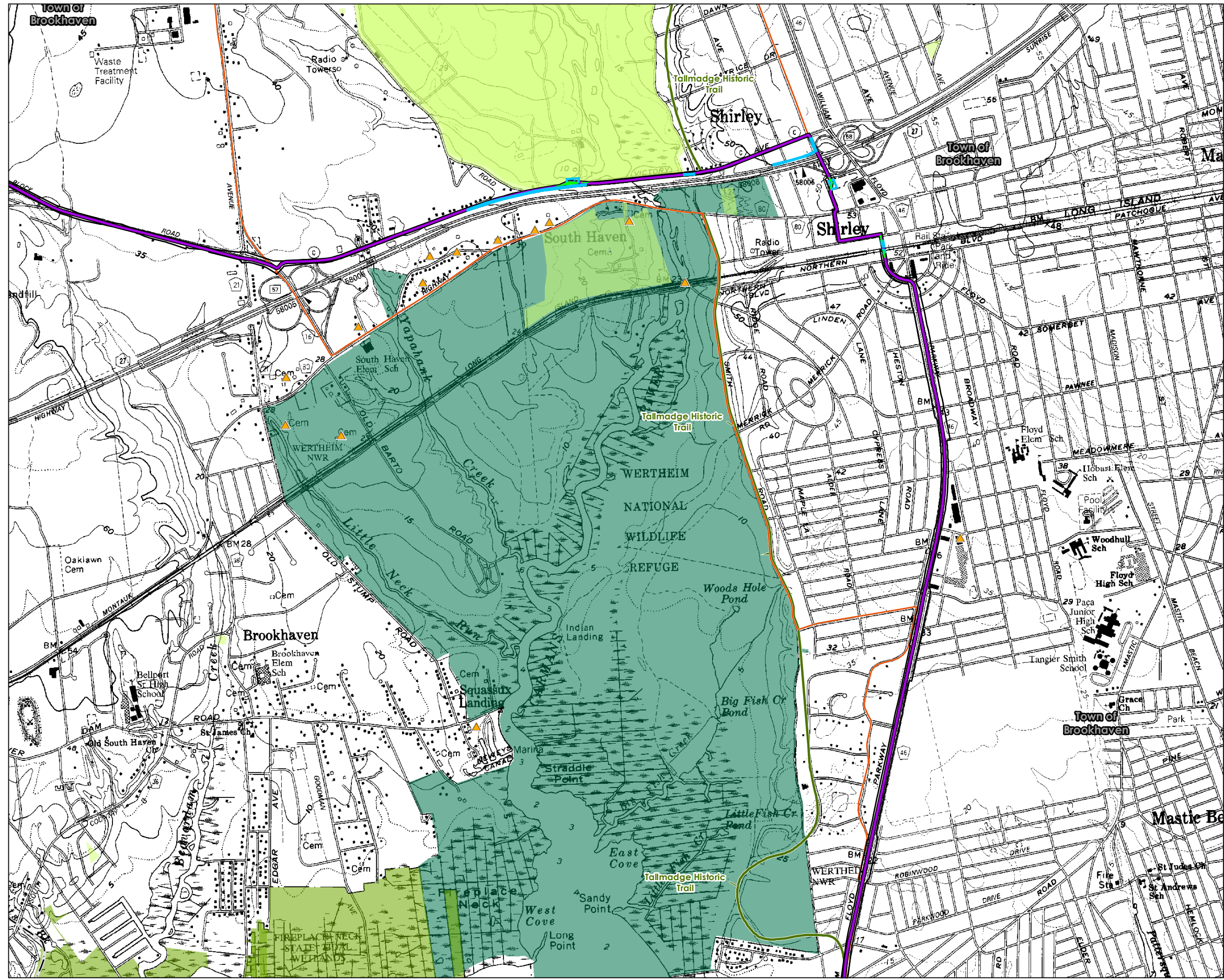
Notes

1. The cable route centerline and trenchless crossing work areas are indicative and subject to final engineering design.

2. Sensitive archaeological site location data are confidential information and therefore are not shown on this figure.

Date	5/26/2021
Project Number	2028113199
Prepared By	PB
Reviewed By	SBG





Revised Figure 2.3-2  
Location of Facilities  
on NYSDOT Mapping

Sunrise  
Wind

Powered by  
Ørsted &  
Eversource

- Legend
- Onshore Transmission Cable-LIE Service Road Route
  - Onshore Transmission Cable Corridor
  - Potential Permanent Tree Clearing
  - Trenchless Crossing Work Area
  - Railroad
  - New York State Department of Transportation (NYSDOT)-Bicycle Route
  - State/National Register of Historic Places
  - Local Park/ Recreation/ Conservation Land
  - State Park/ Recreation/ Conservation Land
  - Village Boundary
  - Town Boundary

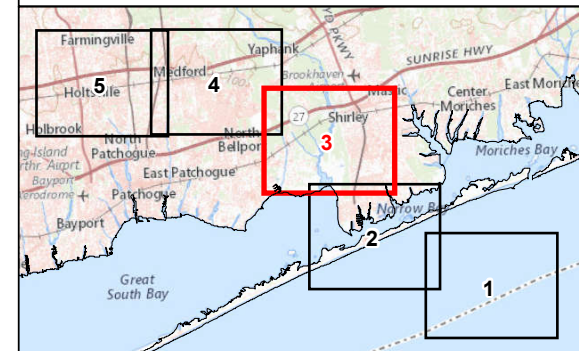
Notes

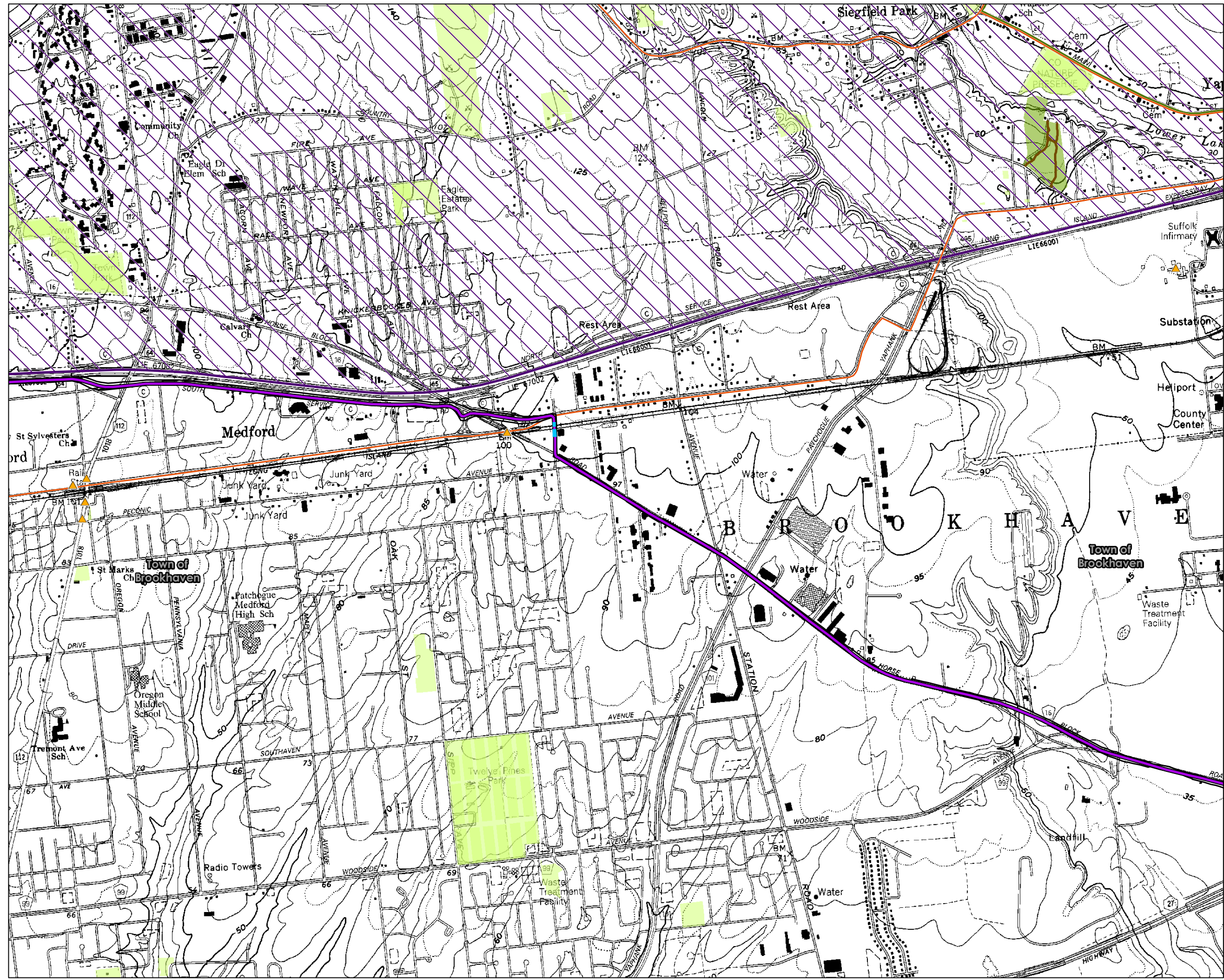
1. The cable route centerline and trenchless crossing work areas are indicative and subject to final engineering design.
2. Sensitive archaeological site location data are confidential information and therefore are not shown on this figure.

Date	5/26/2021
Project Number	2028113199
Prepared By	PB
Reviewed By	SBG



REFERENCE MAP





Revised Figure 2.3-2  
Location of Facilities  
on NYSDOT Mapping

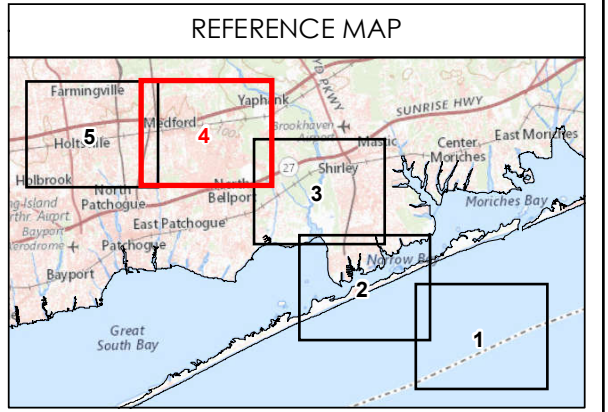
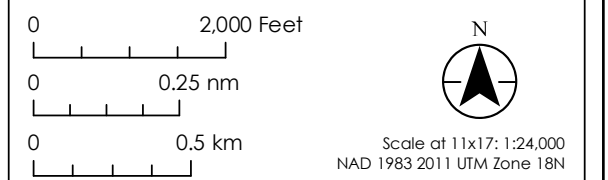
**Sunrise  
Wind**

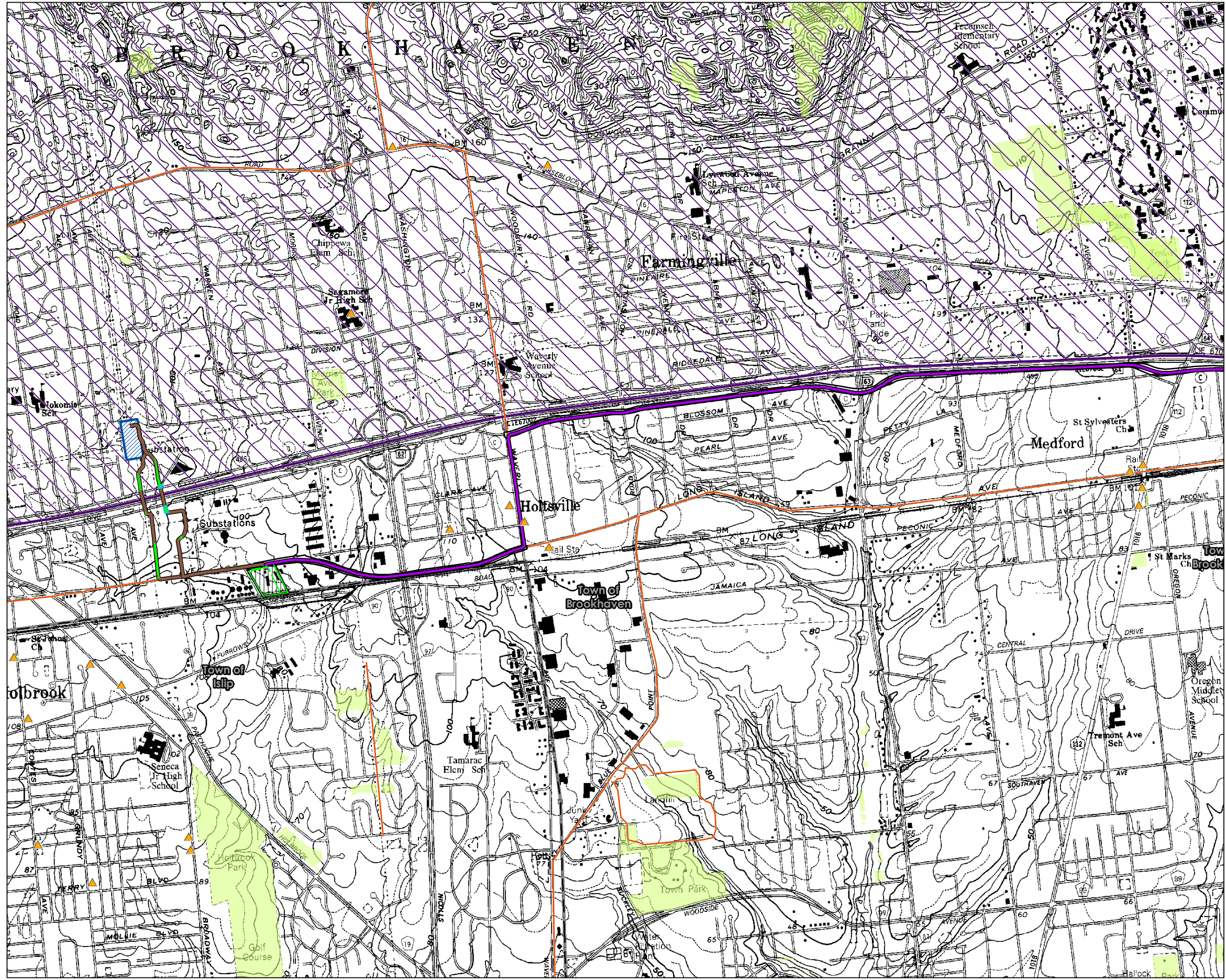
Powered by  
**Ørsted &  
Eversource**

- Legend**
- Onshore Transmission Cable-LIE Service Road Route
  - Onshore Transmission Cable Corridor
  - Trenchless Crossing Work Area
  - Railroad
  - New York State Department of Transportation (NYSDOT)-Bicycle Route
  - State/National Register of Historic Places
  - Local Park/ Recreation/ Conservation Land
  - State Park/ Recreation/ Conservation Land
  - State Heritage Area
  - Town Boundary

- Notes**
1. The cable route centerline and trenchless crossing work areas are indicative and subject to final engineering design.
  2. Sensitive archaeological site location data are confidential information and therefore are not shown on this figure.

Date	5/26/2021
Project Number	2028113199
Prepared By	PB
Reviewed By	SBG





Revised Figure 2.3-2  
Location of Facilities  
on NYSDOT Mapping

Sunrise  
Wind

Powered by  
Ørsted &  
Eversource

- Legend
- Onshore Transmission Cable-LIE Service Road Route
  - Onshore Interconnection Cable Route
  - Onshore Transmission Cable Corridor
  - Union Avenue Site
  - Potential Permanent Tree Clearing
  - Holtbrook Substation
  - Trenchless Crossing Work Area
  - Railroad
  - New York State Department of Transportation (NYSDOT)-Bicycle Route
  - State/National Register of Historic Places
  - Local Park/ Recreation/ Conservation Land
  - State Heritage Area
  - Town Boundary

- Notes
1. The cable route centerline and trenchless crossing work areas are indicative and subject to final engineering design.
  2. Sensitive archaeological site location data are confidential information and therefore are not shown on this figure.

Date	5/26/2021
Project Number	2028113199
Prepared By	PB
Reviewed By	SBG

